



# SYSTEM MANAGER

TRVERSE is the next generation of business management software. Developed entirely with Microsoft technology, it uses .NET and SQL Server, and gives you four layers of adaptability that allow you to personalize, design, integrate and customize the software.

TRVERSE gives you the tools you're already familiar with and provides a seamless interface to Microsoft products such as Word, Excel, and Mail as well as web development tools. System Manager provides features such as multilingual and multicurrency capabilities, and users can choose keyboard navigation, point-and-click navigation, or both. Using combinations of hot keys, you can bring up utilities, delete transactions, and undo your last action.

TRVERSE manages your financial information quickly, easily, and effectively. You can do quick sorts on any field in ascending or descending order with just one mouse click. In addition, TRVERSE provides password protection by application, menu, function, and database object. You'll also find table-driven international and industry-specific language sets and such individual workstation options as keyboard controls, toolbars, and language sets.

In addition to Productivity Reports, TRVERSE also has built-in pivoting tables and charts for a number of functions that help you organize and analyze your business data.

**Set up as many companies as you need for processing and reporting.**

**Close each period within each application to prevent further processing in that period (up to 367 periods allowed per year).**

**Set up an unlimited number of user-defined custom fields with TRVERSE Design Studio.**

**Set up inventory item IDs with description, cost, price and General Ledger accounts, even if you don't have the Inventory application.**

**Set up employee IDs—even without the Payroll application—and use them whenever TRVERSE needs them.**



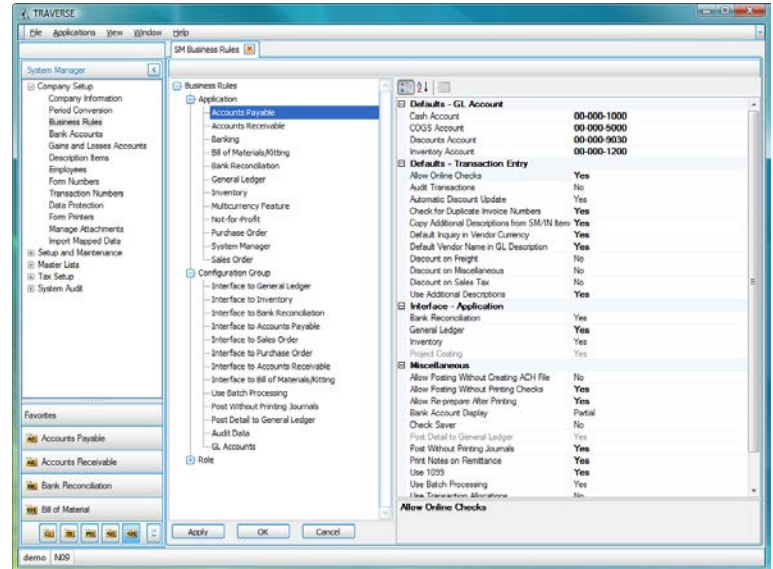
Applied Business Services, Inc.  
1-800-451-7447 [www.osasonline.com](http://www.osasonline.com)



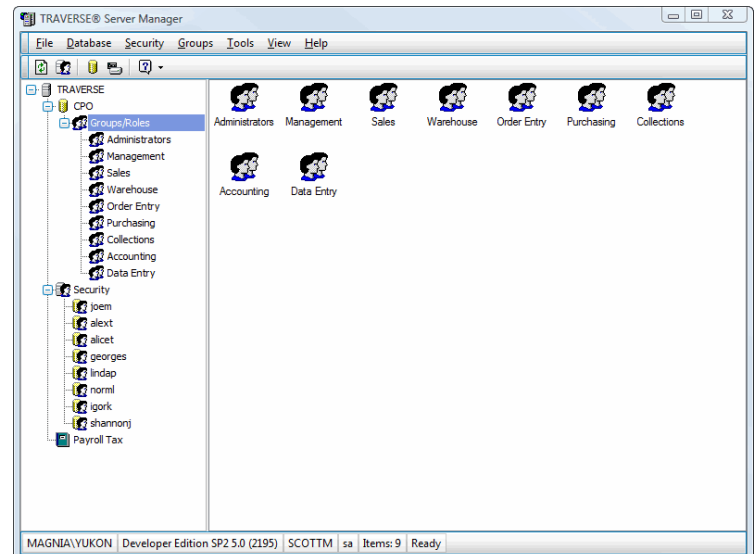
# SYSTEM MANAGER

## Additional System Manager Features:

- Set up and track currencies with easy updating of currency exchange rates.
- Choose conventional or pull-down menu structures with custom options.
- Train employees using the built-in sample data company.
- View company and user ID, displayed on every screen.
- Track individual user activities within TRAVERSE.
- Easily adapt functions to fit your business needs.
- Get the help you need using the comprehensive, customizable online help system.
- Print to file in PDF, rich text, and other formats or export to Excel, HTML, or XML format.
- Optionally preview reports before you print them.
- Control form and series numbers (such as the next Accounts Receivable invoice number and Accounts Payable check number) with one function.
- Make sensitive information unreadable by any application outside of TRAVERSE with data encryption.
- Import mapped data from a program other than TRAVERSE.



*Quick, easy option and default setup of information about your company and the roles of people in your company.*



*The Server Manager is used to manage users, roles, and permissions and to back up, restore, and otherwise maintain your TRAVERSE database.*

## TRAVERSE v11 Requirements:

Hardware and software requirements are constantly changing. Open Systems recommends using the most up-to-date processor available. Please remember that RAM requirements increase with the number of users. TRAVERSE runs on Windows 7, Windows Vista, Windows 2000, Windows XP and Windows Server 2003.

